

CELEBRATING



LOOP-LOC®  
THE ONE. THE ONLY.

IS YOUR POOL COVER THIS SAFE?



Manual Safety Cover  
In accordance with ASTM  
Standard F 1346-91

LOOP-LOC® COVERS  
SAFETY POOL COVERS | 2018

MADE IN THE USA





# SAFETY SWIMMING POOL COVERS

PROTECT YOUR FAMILY WITH THE ONLY MESH POOL COVER THAT PASSED THE ELEPHANT TEST:  
“THE ELEPHANT™ COVER.”

**LOOP-LOC® puts an unbreakable “lock” on your pool** to protect your family. Only LOOP-LOC is available with the patented CABLE-LOC™ and GAPGUARD® Child Safety Intrusion Barriers. They close the dangerous gaps created where raised obstructions meet the cover's edge, so there's no way a child or pet can slip through.

LOOP-LOC's exclusive Computer-Aided Design **ensures a perfect, custom fit for any shape or size pool:** from a simple square to the most complex installation, LOOP-LOC can manufacture a custom cover with the perfect fit for any pool or spa.

**LOOP-LOC always stays tight, clean and beautiful on your pool** – unlike a saggy, unsightly waterbag cover that becomes a dangerous, slippery swamp after just a few rains, LOOP-LOC's super dense mesh allows rain to drain through. The cover stays dry and beautiful in any weather!

By following LOOP-LOC's simple care and maintenance instructions for your mesh or solid cover, you'll be able to open your pool with minimal cleaning and keep your cover in the best shape, year after year!

Unlike solid waterbag covers, a **LOOP-LOC requires no pumping, scrubbing or heavy maintenance.** Plus, it's easy to install and remove with LOOP-LOC's unique anchoring system.



**#AskForTheElephant**

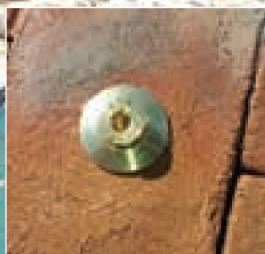
390 MOTOR PKWY., HAUPPAUGE, NY 11788 | [WWW.LOOPLOC.COM](http://WWW.LOOPLOC.COM) | 1.800.LOC.LOOP

(Please note: “Bubbles” the elephant is seen standing on the mesh cover as a demonstration of the substantial amount of weight that LOOP-LOC covers can withstand in the event of an emergency. Contact with sharp-hooved animals will damage the covers.)





Manual Safety Cover  
In accordance with ASTM  
Standard F 1346-91



## UNIQUE ANCHORS

Offer ultimate protection and fit flush with the deck.

# “THE ELEPHANT™ COVER”

AVAILABLE IN GREEN MESH OR YOUR CHOICE OF DESIGNER  
BLACK, GRAY, TAN OR BLUE TO COMPLEMENT YOUR OUTDOOR DÉCOR.



LOOP-LOC® covers not only meet, but exceed, ASTM standards for Safety Swimming Pool Covers F 1346-91. To show our commitment and dedication to the safety and security of your family, LOOP-LOC covers have undergone extensive outside testing through Underwriters Laboratories (UL) and have earned the seal of approval for safety swimming pool covers.

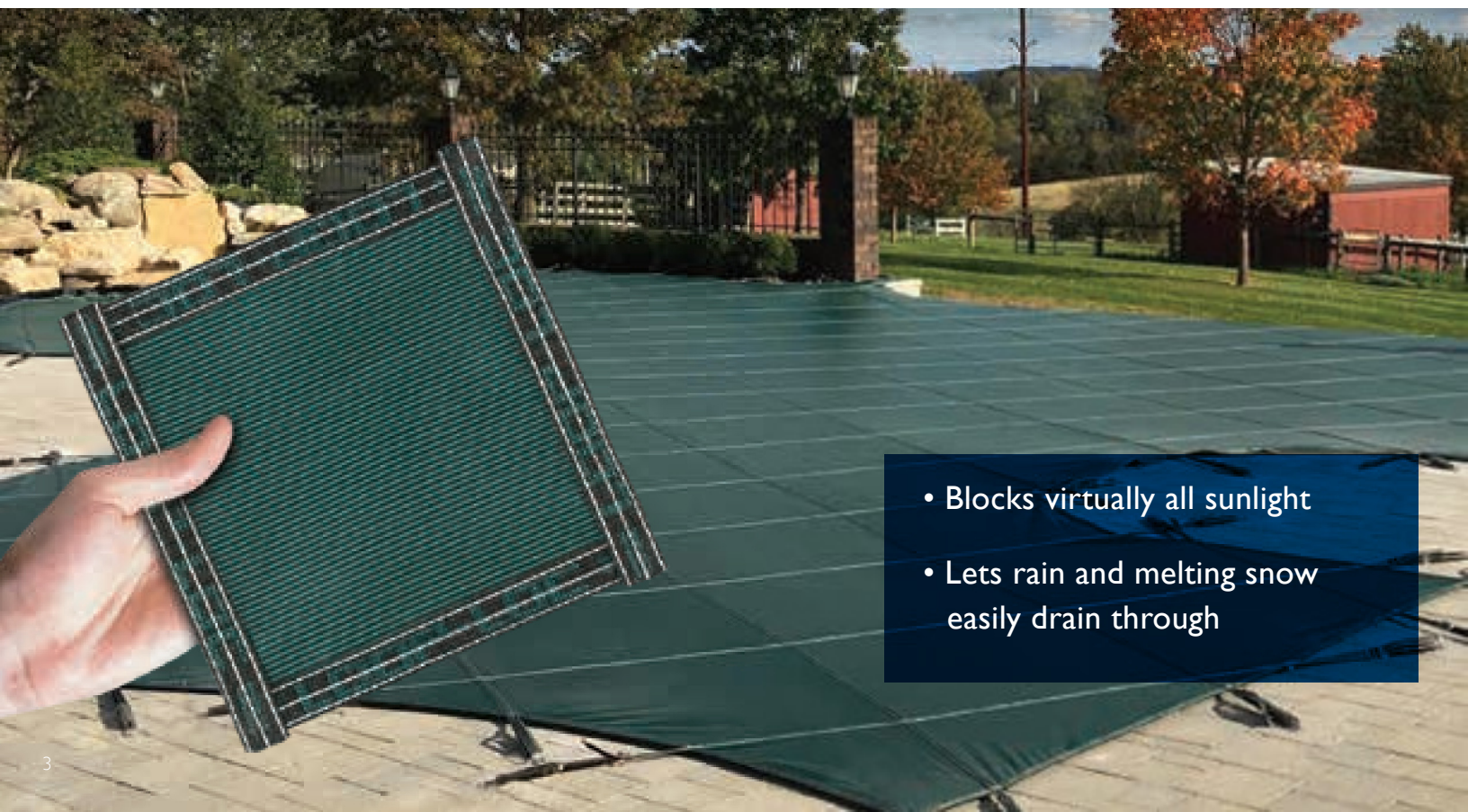




## SUPER DENSE MESH

[#AskForTheElephant](#)

PROTECT YOUR FAMILY WITH THE ONLY MESH POOL COVER THAT PASSED THE ELEPHANT TEST. You'll probably never need a pool cover safe and strong enough to support the weight of "Bubbles," the African elephant (seen on the cover). But imagine how safe you'll feel owning the only pool cover that's proven it can: the LOOP-LOC® Safety Swimming Pool Cover.



- Blocks virtually all sunlight
- Lets rain and melting snow easily drain through



# THERE'S ONLY ONE LOOP-LOC®.

## HERE ARE **15 REASONS** WHY.

1

A LOOP-LOC cover is the only safety cover to be awarded UL certification year after year.

2

Mesh construction lets rain and melting snow drain right through.

3

LOOP-LOC is so durable, it's backed by a 15-year prorated warranty and so safe, it may reduce your liability insurance.

4

LOOP-LOC is so lightweight, putting it on and taking it off your pool is a snap.

5

LOOP-LOC blends beautifully into any backyard, with your choice of standard Spring Green or four optional designer colors.

6

LOOP-LOC's patented CABLE-LOC™ and GAPGUARD® Child Safety Intrusion Barriers close the gap created when a pool includes raised obstructions located at the cover's edge.

7

The polyester bonded thread used in LOOP-LOC covers is 30% stronger in thread size and produces a higher margin of safety in all seams (compared to our competitors).

8

Double-perimeter webbing and double-thick straps give our covers an incredibly high break strength.

9

We use extremely high-strength, non-corrosive 302/304 grade stainless steel springs for superior weight-bearing capacity.

10

Unique brass anchors recess flush with the deck when the cover is removed.

11

We sew the webbing to the cover using contrasting white thread, instead of black, to ensure that not a single stitch is missed.

12

We use 87% black yarn in our fabric for superior UV stability.

13

Chafe strips are manufactured with exclusively virgin material – not “regrind,” which tends to stain decking.

14

Non-corrosive aluminum tips are double-notched for stability.


15

The large X-tacking on LOOP-LOC straps is sewn manually for precise placement and maximum strength.



# INTRODUCING AQUA-XTREME VIRTUALLY SOLID MESH

MAXIMUM LIGHT BLOCKING, LIGHTNING-QUICK DRAINAGE,  
ULTIMATE CONVENIENCE!



Imagine opening your pool in the spring and having it look almost as clean as the day you closed it. That's what you can expect from new Aqua-Xtreme "Virtually Solid" mesh safety covers by LOOP-LOC®. Our ultimate light blocking fabric not only deters algae growth but drains lightning-quick. Unlike other light blocking covers, this one drains up to 80 gallons per minute without clogging. Plus, the unique, new weave is super strong to give you complete peace of mind. Available in popular "Green" and new "Sapphire Navy."



- Ultimate light blocking to deter algae growth
- Super-strong, quick-draining mesh
- 50% lighter than solid covers for easy handling
- Available in Green and Sapphire Navy







Manual Safety Cover  
In accordance with ASTM  
Standard F 1346-91



COVER ABOVE IS GRAY ULTRA-LOC® III

# ULTRA-LOC® III

THE STRONG, SOLID SAFETY COVER

**Blends beautifully into  
any backyard décor.  
Available in green  
or your choice of  
designer blue, tan  
or NEW gray!**

To show our commitment and dedication to the safety and security of your family, LOOP-LOC® covers have undergone extensive outside testing through Underwriters Laboratories (UL) and have earned the seal of approval for safety swimming pool covers.







## DRAINS FAST WITH OPTIONAL MESH DRAINAGE PANELS

Cover without panels blocks 100% of sunlight and comes with automatic pump, which must be used at all times to meet ASTM safety cover standards.

For those who prefer the superior light-blocking properties of a solid safety pool cover, there's new ULTRA-LOC® III from LOOP-LOC®. Strong, durable, and maintenance-free!

### Our New ULTRA-LOC III Solid Safety Pool Covers Feature:

- Premium coated vinyl material with enhanced 100% polyester rip-stop scrim
- Super-strong, durable material
- Fast, easy draining with optional mesh drainage panels
- Unlike traditional solid water bag covers, there is no scrubbing or maintenance required
- Fits any pool or spa perfectly, from a simple square to a complex installation with a custom cover
- LOOP-LOC covers not only meet, but exceed, ASTM standards for Safety Swimming Pool Covers F 1346-91





Manual Safety Cover  
In accordance with ASTM  
Standard F 1346-91



## COMMERCIAL COVERS

LOOP-LOC® KEEPS YOUR FACILITY SAFE AND SAVES YOU MONEY.

In the off-season, an empty, unsupervised commercial pool can be an invitation for disaster. Locked gates or fences alone have often proved ineffective in preventing children and pets from gaining access to the pool area.

- Manufactured with the highest quality materials
- Built super-strong
- 15-year prorated warranty



# LOOP-LOC® SPECIFICATIONS

EXCEEDS ASTM STANDARD F 1346-91 FOR COMMERCIAL AND RESIDENTIAL INSTALLATIONS.

## MATERIAL:

### SUPER DENSE MESH:

Polypropylene-extruded monofilament yarn: 525 denier in the warp and 595 denier in fill. 41 x 20 construction plus 80% black yarn and 20% green yarn for enhanced U.V. properties, 4.7 ounces per sq. yard.

### AQUA-XTREME MESH:

Polypropylene-extruded, patented, double-layer weave technology to promote high water flow and highest shade values. Monofilament in the warp and combination of mono/fibrillated tape in fill direction, 86% black yarn and 14% green and/or blue yarns for enhanced U.V. properties, 6.7 ounces per sq. yard.

### ULTRA-LOC® III:

High adhesion coated vinyl with a woven rip-stop scrim, enhanced U.V. and mildew properties, 14 ounces per sq. yard.

### WEBBING:

1" wide polypropylene, polyester with nylon filler. Minimum break strength: 2,100 pounds single. To be used double-thick for minimum strap break-strength of 4,200 pounds. Minimum 90% black yarn. (Cotton, wool or other natural fibers treated or untreated are unacceptable for safety cover use.)

### CHAFING STRIPS:

(Under cover) 1" minimum width, 20" to 36" long (depending on cover overlap) extruded solid, virgin vinyl 3/16" thick. All inside corners heavily padded.

### SAFETY BARRIER/GAPGUARD®:

Solid, virgin vinyl, 3" extrusion for raised walls, etc., and 15" extrusion for raised steps as needed to meet (or exceed) ASTM Safety Standard F 1346-91. LOOP-LOC® Patent No. 4,982,457.

### THREAD:

Dabond polyester Veemo – UVR. Size 138. Three rows of stitching all directions.

### STANDARD SPRINGS:

302/304 stainless steel, two draw-bar compression type with thick vinyl tubular deck-protective covers. For residential applications.

### COMMERCIAL SPRINGS:

Made from the same high quality material as our standard springs, 302/304 stainless steel. Draw-bar and coil wire diameter increased to handle larger load capacities with thick vinyl tubular deck-protective covers. For covers over 2,500 sq. ft.

### ANCHORS:

Brass, flush-mounted in deck with screw-type insert. 4,000 pound break strength at neck.

### INSTALLATION TOOLS:

30" long steel rod, with notched end and plastic grip.

### FINISHED COVER:

To have sections approximately 3' x 3'. (For residential rectangular pools only, cover may be made with approximately 5' x 5' sections.) All straps to be "X"-tacked at cover edge with stainless steel buckles and aluminum tips.

### WARRANTY:

Safety cover will have a 15-year prorated warranty.



Save big on water because the pool doesn't need to be drained at the end of every season.



Have the potential to lower your liability insurance premium.



Extend the life of your pool by reducing the need for repainting or replastering.



Help the environment. Keeping the pool filled means you don't have to worry about disposing of chlorine and chemically treated water, an environmental hazard that many states are in the process of regulating.



# UNIQUE SOLUTIONS FOR ONE-OF-A-KIND POOLS



## CABLE-LOC™

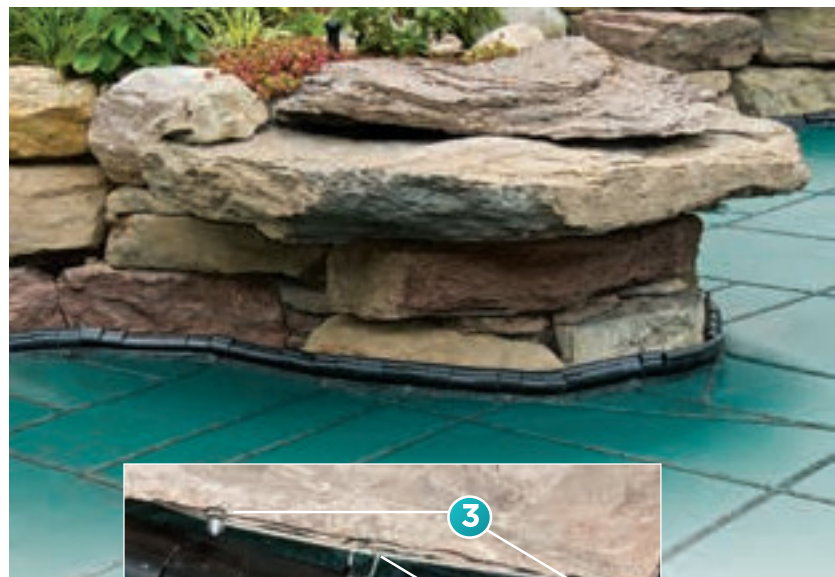
WE'VE RAISED THE BAR ON RAISED  
WALL INSTALLATION.

Installing LOOP-LOC® safety covers on pools with raised walls is now a whole lot easier for you ... and a more beautiful experience for your customers. Our innovative new CABLE-LOC treatment features flexible anchor positioning for much faster installation, exceptional quality materials, and a sleek new look homeowners will love!

33%  
FEWER  
ANCHORS

FASTER  
& EASIER  
TO INSTALL

ELEGANT  
& STURDY  
DESIGN



1. New smaller-profile SAFEDGE® Safety Barrier is segmented to better adapt to walls
2. Aircraft-quality stainless steel cable has 5,000 lb. break strength
3. Maximum 18" anchor spacing

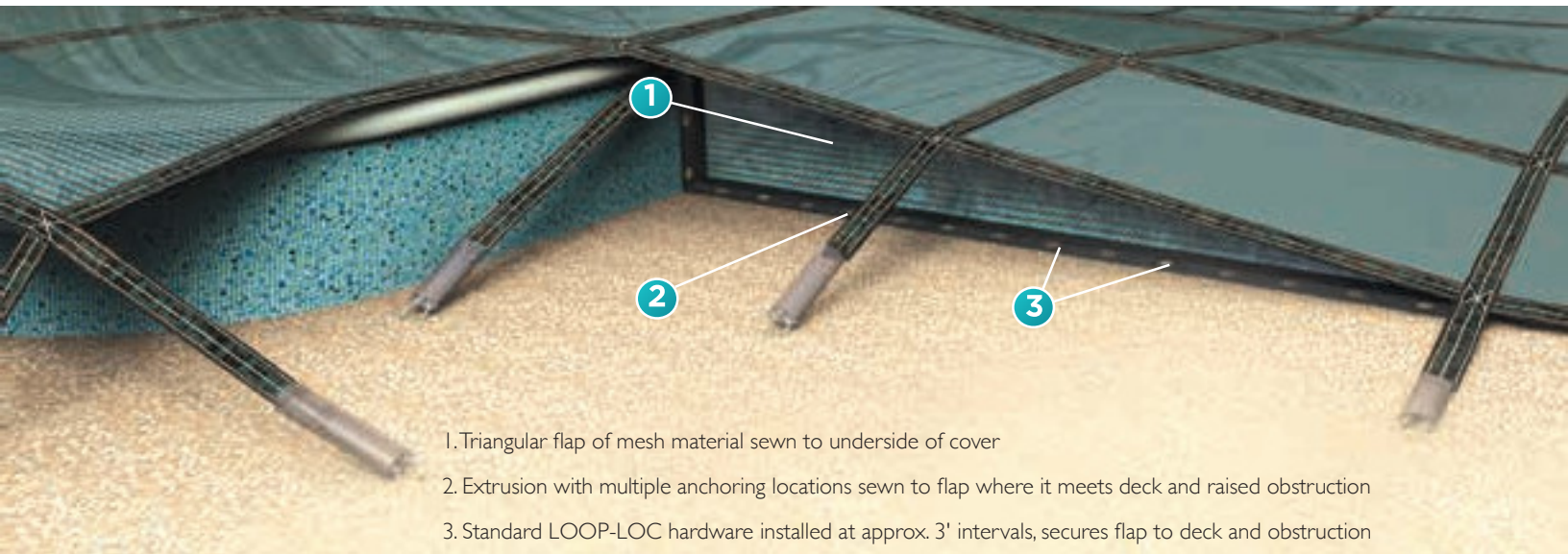
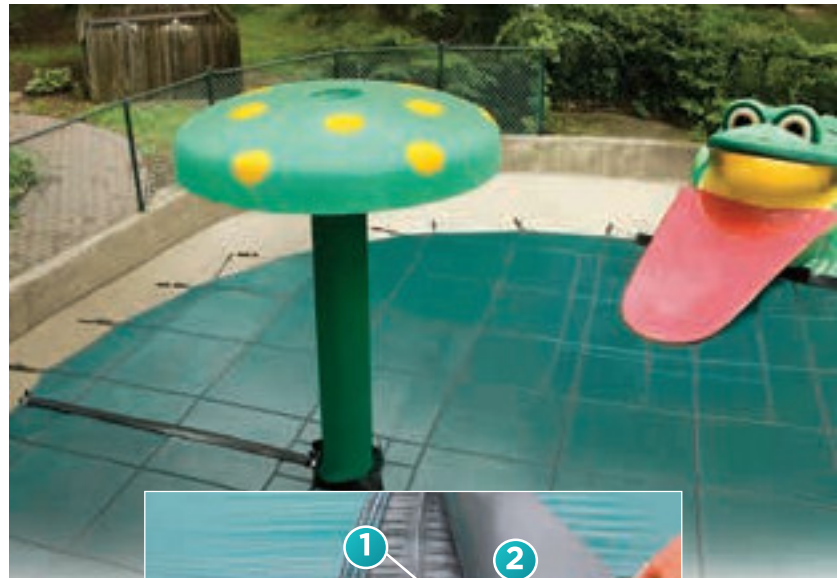


# AQUA-LOC®

THE ZIPPED-UP SOLUTION FOR  
OBSTRUCTIONS AND OVERSIZED POOLS.

Large commercial pools and pools with rails and other non-removable raised obstructions have always posed challenges for safety swimming pool cover installation. LOOP-LOC®'s patent pending new AQUA-LOC treatment is easy to install, easy to use, and greatly reduces the need for strap-and-buckle treatments. Meets all ASTM standards for safety covers.

1. YKK industrial zipper secures cover sections
2. Black urethane UV coating protects zipper
3. Stainless steel block prevents zipper from being opened
4. Key-lockable cable secures block in place



1. Triangular flap of mesh material sewn to underside of cover
2. Extrusion with multiple anchoring locations sewn to flap where it meets deck and raised obstruction
3. Standard LOOP-LOC hardware installed at approx. 3' intervals, secures flap to deck and obstruction

# PROTECT-A-GAP®

THE SAFEST, SIMPLEST WAY TO CLOSE GAPS CREATED BY RAISED SPAS.

LOOP-LOC's PROTECT-A-GAP technology is the perfect safety cover solution for raised spas, waterfalls, rises or any obstruction higher than 9", where a two-cover treatment is not desired. It is easy to install and can be "field fit" to provide the most secure gap barrier for each cover. Plus, the materials are flexible enough to provide a close fit on virtually any shape. With PROTECT-A-GAP, you can feel confident that your pool will remain safe and secure.





# ON-GROUND POOL COVERS

SUPERIOR SAFETY, STRENGTH AND PROTECTION.

Owners of on-ground pools (surrounded by at least 2 feet of deck\*) can enjoy the same safety, strength and protection that owners of in-ground pools have enjoyed for years with a LOOP-LOC® On-Ground Safety Cover.

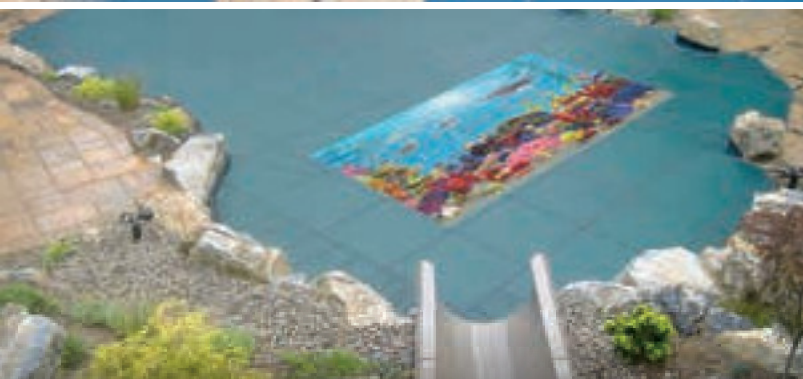
- Goes on and off in a snap!
- Unique patented bracket fits many decks
- Built super strong to protect children and pets

## The Only On-Ground Pool Cover Good Enough To Be LOOP-LOC

- ✓ Mesh lets rain pass through, so no hazardous standing water collects on top.
- ✓ Also available in ULTRA-LOC® solid.
- ✓ Noncorrosive type 302/204 stainless steel springs and double-notched aluminum tips.
- ✓ Durable double-thick solid polypropylene webbing straps surround entire perimeter, not just corners.
- ✓ Easy to maintain. Mesh fabric requires no scrubbing when you remove it.

\*NOTE: Pool must be surrounded by a self-supporting deck at least 2 feet wide. Not for basic above-ground pools.





# LOGO-LOC™

Now you can customize your pool cover with a statement that's all about you with LOGO-LOC. Want to personalize your cover by adding family, favorite destinations, pets, monograms? Send a photo. Want to promote your hotel, brand, condominium, business? Send us your logo. Thanks to LOGO-LOC, your pool will draw attention to whatever you want to showcase.



- Customize your pool cover with a hi-res image of at least 300 dpi
- Monograms, pictures, scenes, and company logos accepted
- Maximum logo image area: 16' (W) x 150' (L)
- Two-piece logos welcomed





# PROTECTING YOUR MOST VALUABLE ASSET: YOUR FAMILY.



## BABY-LOC®

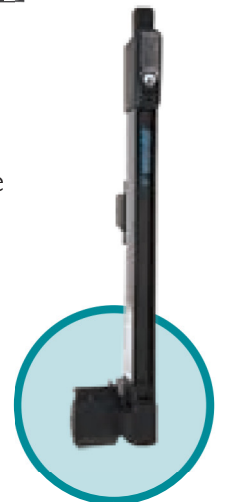
THE ONLY REMOVABLE FENCING GOOD ENOUGH  
TO COME FROM LOOP-LOC®.

### A SUPERIOR CHOICE

- BABY-LOC fencing comes in standard 4-foot and extended 5-foot heights. Both meet all ASTM standards and U.S. Consumer Product Guidelines. Choose the height that's right for you.
- Quad reinforced 4-foot aluminum poles and "Y" reinforced 5-foot aluminum poles are noncorrosive, rustproof and color-matched to our black fabric.

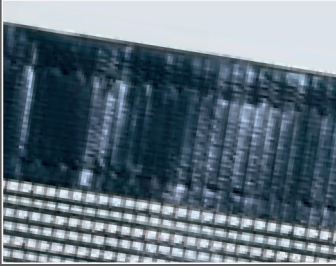
### UNIQUE SELF-LATCHING MAGNETIC GATE

BABY-LOC offers an optional self-closing and self-latching gate. Our unique latching mechanism requires very little force to secure and is easily adjustable. It's also key-lockable!





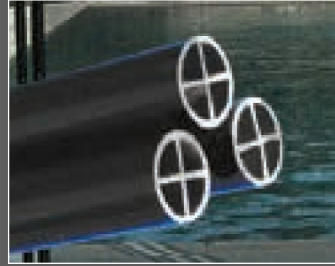
# BUILT FOR STRENGTH, BUILT TO LAST.



**High Quality  
Construction**



**Easy Setup  
and Removal**



**Premium  
Aluminum Poles**



**Convenient and  
Hassle-Free**

When it comes to keeping kids safe, there is no substitute for adult supervision, but no parent can be everywhere, every minute. **BABY-LOC®** is a convenient, cost-effective additional layer of protection to prevent access to pools by toddlers. Plus, it's built strong, built to last, and can be put up or taken down in mere minutes!



**Solid brass double-ended  
latches will never rust or  
corrode.**

**Superior poly-coated, open-weave  
mesh black fabric for high tensile  
strength and excellent UV stability.**

